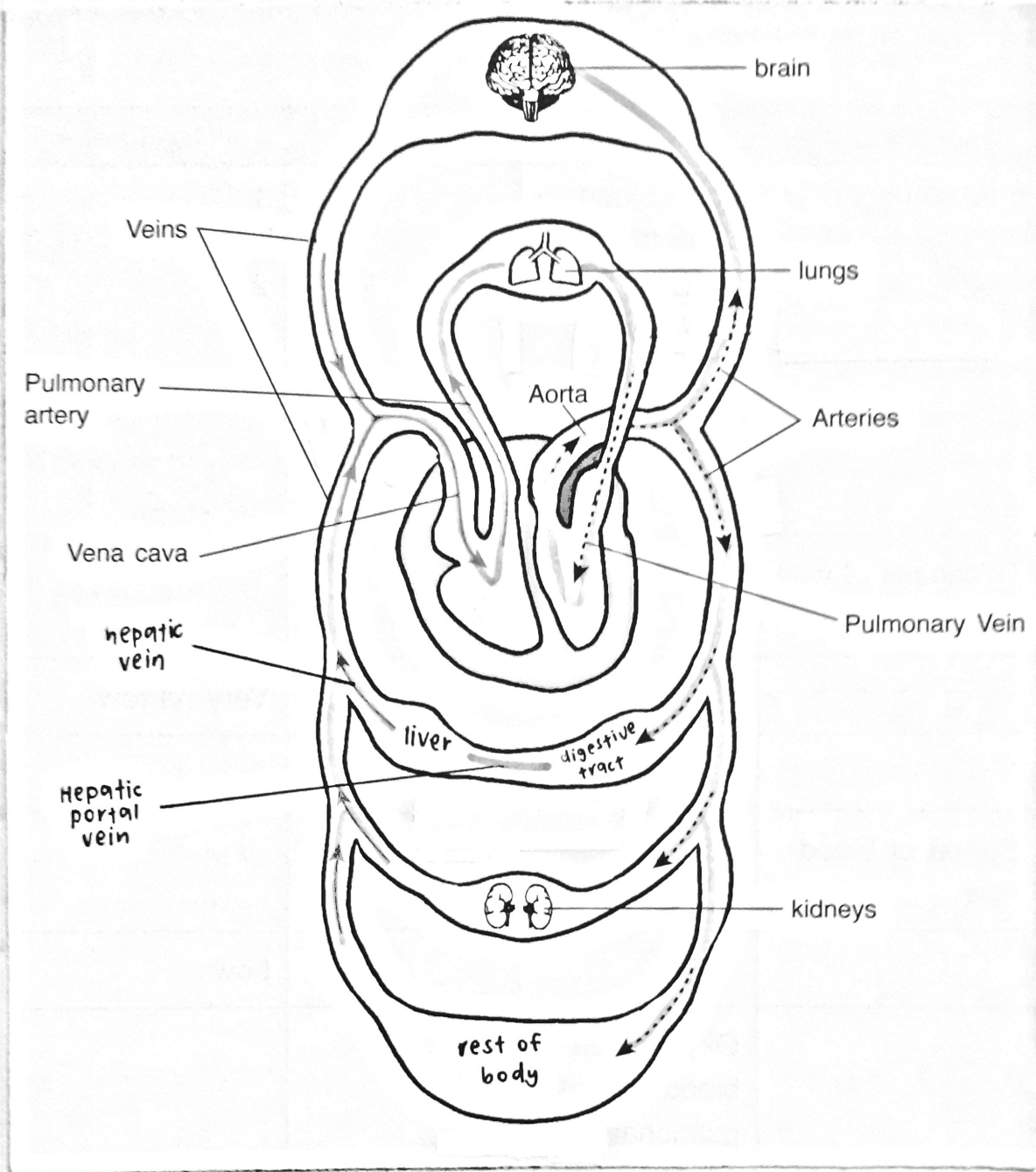


BLOOD FLOW



- o pulmonary arteries
 - deoxygenated blood from heart to lungs
- o pulmonary veins
 - oxygenated blood from lungs to heart
- o aorta
 - oxygenated blood from heart to rest of body
- o vena cava
 - returns blood from rest of body to heart
- o hepatic portal vein
 - transports blood from alimentary canal to liver
- o hepatic vein
 - transports blood from liver to heart